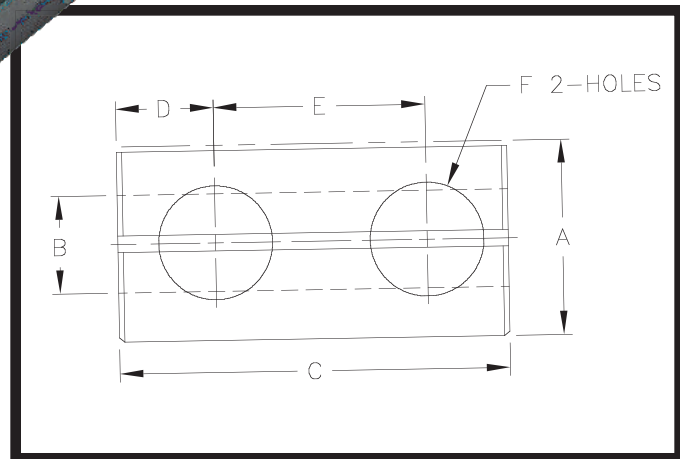
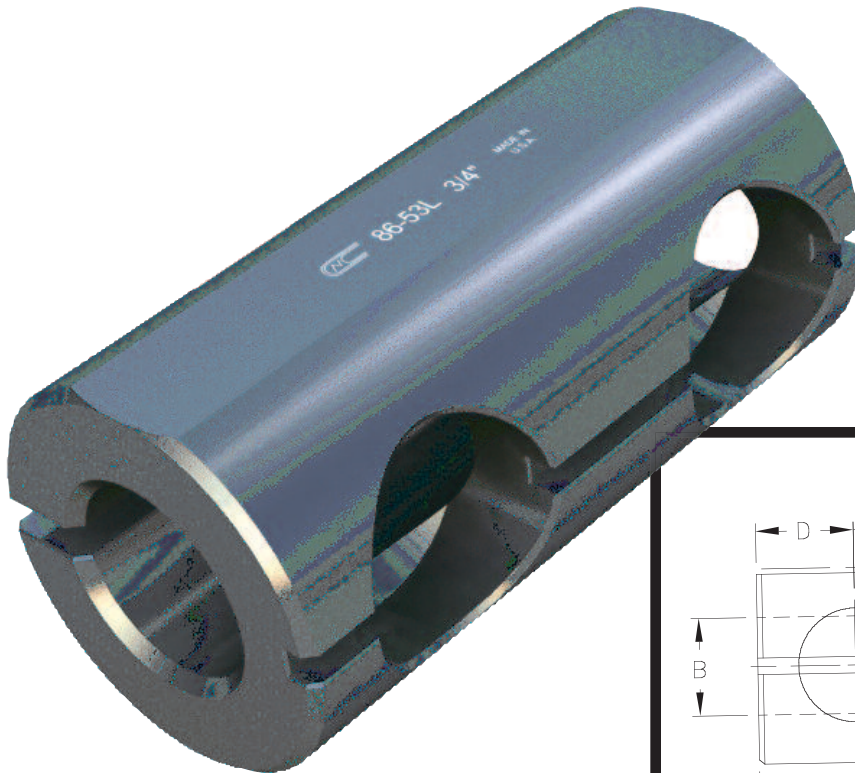




# Toolholder Bushing Type “L”

All “L” style bushings are shoulder-less, have set screw clearance holes opposite the slot and have a split with a flat on the O.D.

“L” Style Bushings are used to adapt drills, boring bars and shank tools to any size in a standard turret or toolholder. CNC has full selection and assortment of these bushings. We can supply these to you, minimizing production downtime – allowing you to increase production. Select the O.D. size that fits your machine and order from the chart below.



CNC PART NUMBER	BUSH DIA.		STANDARD BORE SIZES STOCKED		SPECIAL BORE SIZES AVAILABLE		OVERALL LENGTH	LENGTH DIMENSIONS		HOLE SIZE	NO. HOLES
	A		B		MIN.	MAX.	C	D	E	F	
	IN.	MM	IN.	MM							
CNC 86-53L	1½	40	⅜, ½, ⅝, ¾, 1, 1¼	10, 12, 16, 20, 25, 32	¼	1¼	3	¾	1⅝	⅞	2
CNC 86-54L	1¾	45	½, ⅝, ¾, 1, 1¼, 1½	12, 16, 20, 25, 32, 40	⅜	1½	3	¾	1⅝	⅞	2
CNC 86-56L	2¼	60	⅝, ¾, 1, 1¼, 1½, 1¾, 2	16, 20, 25, 32, 40, 50	½	2	4½	⅞	2	1	2
CNC 86-57L	2¾	70	¾, 1, 1¼, 1½, 1¾, 2, 2¼	20, 25, 32, 40, 50	½	2¼	4½	⅞	2	1	2

\*Special sizes available to fit your machine specifications: inch-metric, metric-inch, or metric-metric.

\*All Orders ship standard in inch sizes. If required; please specify metric O.D. or I.D., when ordering.