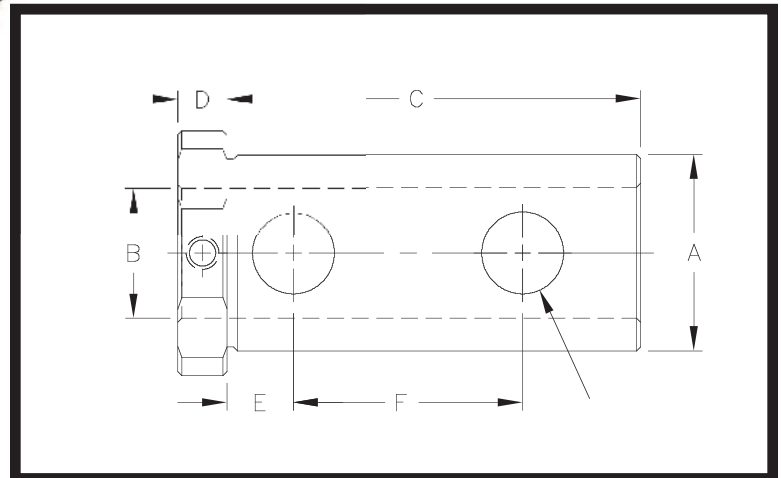
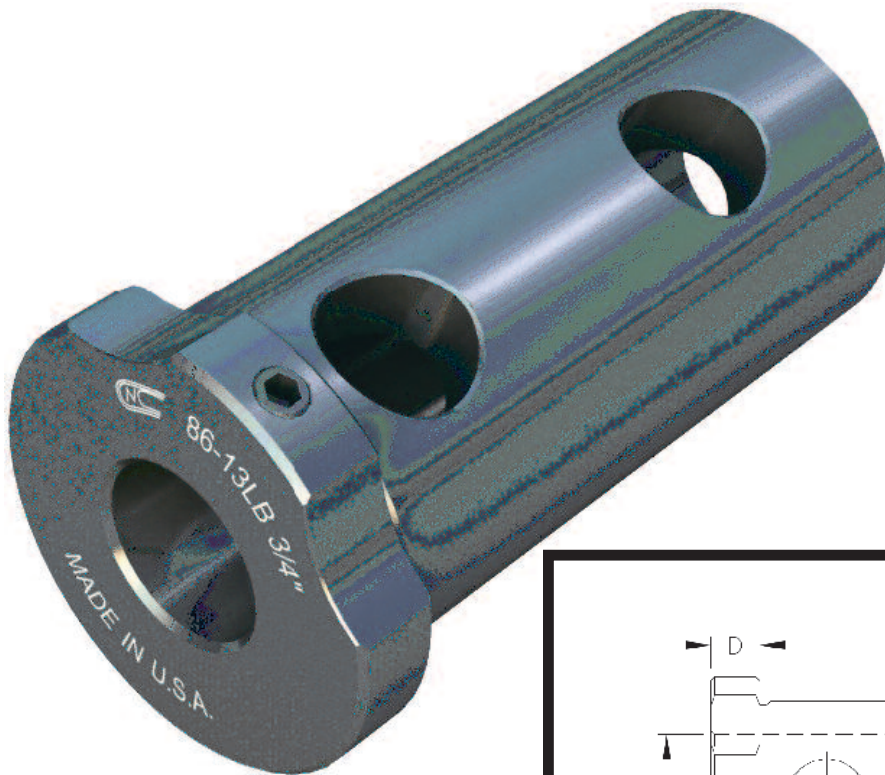




Toolholder Bushing Type “LB”

This Type LB Toolholder Bushing with long solid body, has four clearance holes so that you can clamp directly on the tool with Set Screws for positive alignment of the cutting edge of the tool. Manufactured to include clearance notches for coolant. They are hardened and precision ground concentric. For use on all Okuma CNC Machines.



CNC PART NUMBER	BUSHING DIA.		STANDARD BORE SIZES STOCKED		LENGTH UNDER HEAD	HEAD THICKNESS	LENGTH DIM.		HOLE SIZE
	A		B		C	D	E	F	G
	INCH	M M	INCH	M M					
CNC 86-12LB	1 1/4	32	3/8, 1/2, 5/8, 3/4, 7/8, 1	10, 12, 16, 20, 25	3 1/8	3/8	1/2	1 3/4	5/8
CNC 86-13LB	1 1/2	40	3/8, 1/2, 5/8, 3/4, 7/8, 1, 1 1/4	10, 12, 16, 20, 25, 32	3 1/8	3/8	1/2	1 3/4	5/8
CNC 86-15LB	2	50	1/2, 5/8, 3/4, 7/8, 1, 1 1/4, 1 1/2, 1 3/4	12, 16, 20, 25, 32, 40, 45	4 1/2	1/2	1/2	2 3/4	11/16

*Special sizes available to fit your machine specifications: inch-metric, metric-inch, or metric-metric.

*All Orders ship standard in inch sizes. If required; please specify metric O.D. or I.D., when ordering.