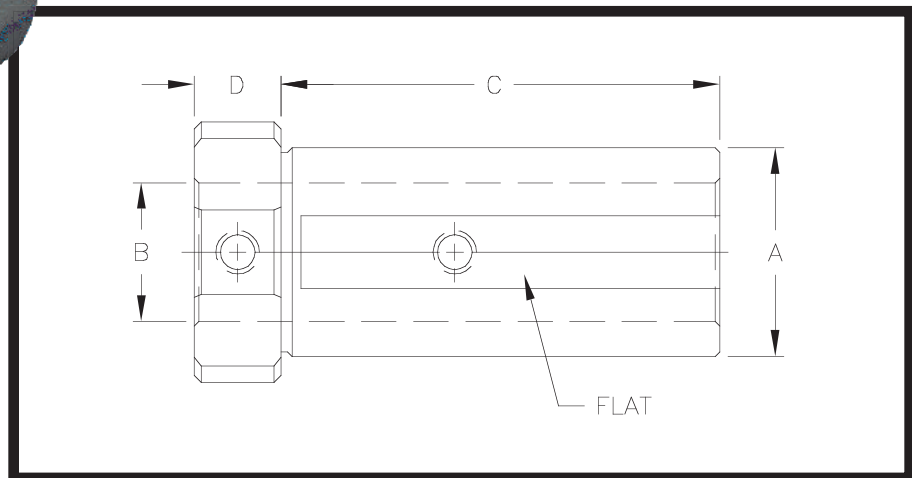
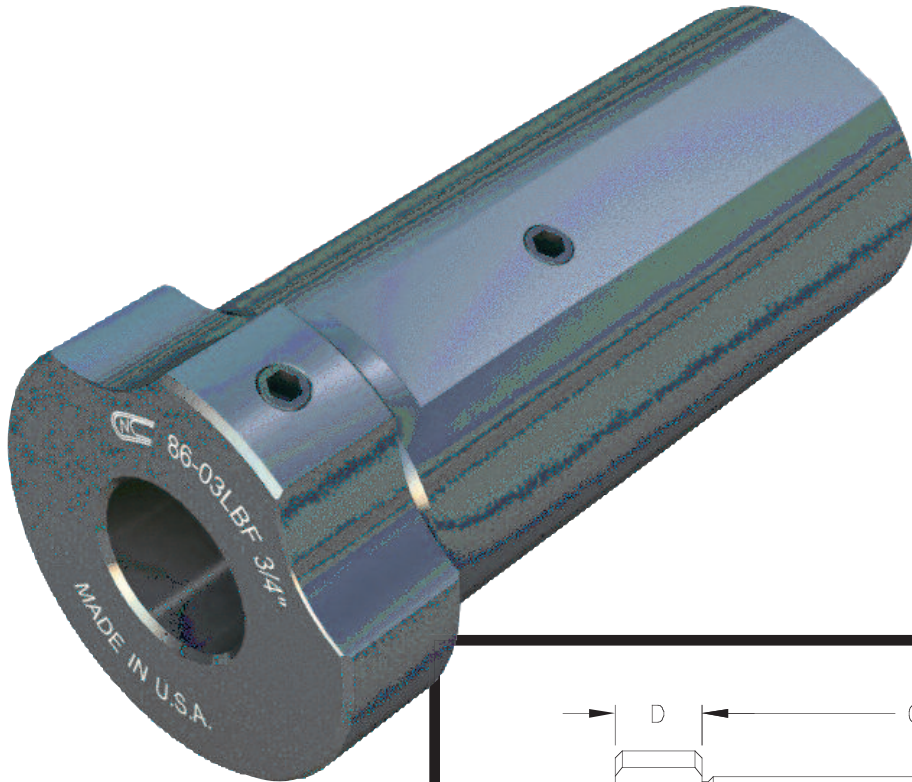




# Toolholder Bushing Type “LBF”

These LBF Type Bushings are manufactured with a flat for clamping the Toolholder and two set screws for clamping a variety of Drills, Boring Bars and other Shank Tools. Equipped with two clearance notches for coolant. Are Heat Treated and precision ground concentric. This Universal Style is good for Coolant Through the Tool applications due to its solid configuration. For use on all Okuma CNC Machines.



CNC PART NUMBER	BUSHING DIA.		STANDARD BORE SIZES STOCKED		LENGTH UNDER HEAD	HEAD THICKNESS
	A		B		C	D
			INCH	M M		
CNC 86-12LBF	1 1/4	32	3/8, 1/2, 5/8, 3/4, 7/8, 1	10, 12, 16, 20, 25	2 13/16	5/8
CNC 86-03LBF	1 1/2	40	3/8, 1/2, 5/8, 3/4, 7/8, 1, 1 1/4	10, 12, 16, 20, 25, 32	3 5/32	5/8
CNC 86-05LBF	2	50	1/2, 5/8, 3/4, 7/8, 1, 1 1/4, 1 1/2, 1 3/4	12, 16, 20, 25, 32, 40, 45	3 3/4	3/4

\*Special sizes available to fit your machine specifications: inch-metric, metric-inch, or metric-metric.

\*All Orders ship standard in inch sizes. If required; please specify metric O.D. or I.D., when ordering.