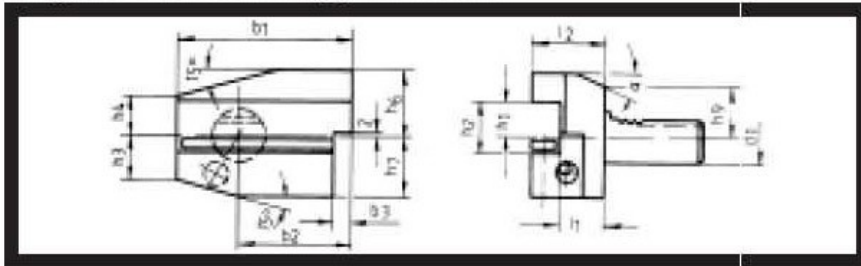


**CALL US TOLL FREE TO ORDER:
(800) 423-5145**

Turning Toolholder – Form B7

Right-Hand Long-Inverted



PART NUMBER	d ₁	b ₁	b ₂	b ₃	h ₁ in	h ₁ mm	h ₂	h ₃	h ₄	h ₆	h ₇	h ₈	L ₁	L ₂	α
CNC86 27.1612	16	58	39	5	½	12	17	15	15	22	20	18	13	24	30
CNC86 27.1612.1	16	58	39	5	½	12	17	15	15	22	20	18	23	34	30
CNC86 27.2016	20	75	50	7	⅝	16	22	19	19	30	25	23	16	30	30
CNC86 27.2016.1	20	75	50	7	⅝	16	22	19	19	30	25	23	26	40	30
CNC86 27.2516	25	75	50	7	⅝	16	22	22.5	22.5	30	25	25	16	30	30
CNC86 27.2516.1	25	75	50	7	⅝	16	22	22.5	22.5	30	25	25	26	40	30
CNC86 27.3020	30	100	65	10	¾	20	29	26	22	38	35	28	22	40	25
CNC86 27.3020.1	30	100	65	10	¾	20	29	26	22	38	35	28	42	60	25
CNC86 27.3025	30	100	65	10	1	25	34	26	28	44	35	40	22	47	25
CNC86 27.4025	40	118	75.5	12.5	1	25	34	35	30	48	42.5	32.5	30	44	30
CNC86 27.5025	50	130	80	16	1	25	34	42	35	60	50		30	55	
CNC86 27.5032	50	130	80	16	1¼	32	41	42	35	60	50		22	55	
CNC86 27.6032	60	145	82.5	16	1¼	32	41	46	42.5	62.5	62.5	42.5	30	60	
CNC86 27.8040	80	190	110	20	1½	40	53	60	55	80	80		40	75	

Expanding Collets
Tool Blocks - Collet
Chucks - Special
Tooling



ROVI
PRODUCTS INC.
RoviProducts.com