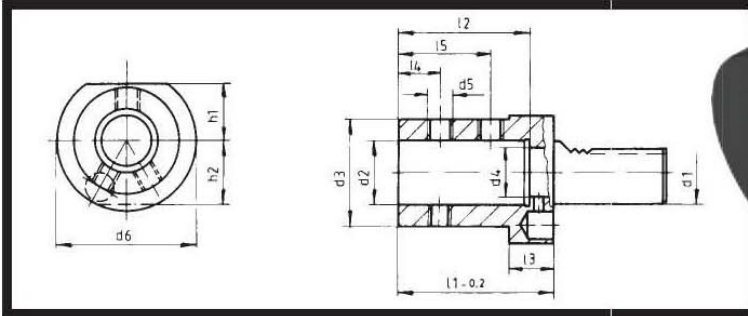


CALL US TOLL FREE TO ORDER: (800) 423-5145

Boring Bar Holder – Form E1

Internal Coolant Flow



PART NUMBER	d ₁	d ₂ in	d ₃ mm	d ₄	d ₅	d ₆	d ₇	h ₁	h ₂	L ₁	L ₂	L ₃	L ₄	L ₅
CNC86 51.2016	20	¾	16	48	12	¾-16	50	23	23	67	54	18	15	35"
CNC86 51.2020	20	¾	20	48	12	¾-16	50	23	23	67	54	18	15	35"
CNC86 51.2025	20	1	25	48	17	¾-16	50	23	23	71	59	18	17	40"
CNC86 51.2516	25	¾	16	41	12	¾-16	58	25	25	67	54	18	15	35"
CNC86 51.2520	25	¾	20	44	12	¾-16	58	25	25	67	54	18	15	35"
CNC86 51.2525	25	1	25	45	17	¾-16	58	25	25	71	59	18	17	40"
CNC86 51.2532	25	1¼	32	50	24	½-13	60	25	25	80	63	22	15	38"
CNC86 51.3008	30	⅝	8	46	6	¼-20	68	28	30	67	54	22	15	34"
CNC86 51.3012	30	½	12	46	10	¼-20	68	28	30	67	54	22	15	34"
CNC86 51.3016	30	¾	16	46	12	¾-16	68	28	30	67	54	22	15	35"
CNC86 51.3020	30	¾	20	50	12	¾-16	68	28	30	67	54	22	15	35"
CNC86 51.3025	30	1	25	55	17	¾-16	68	28	30	71	59	22	17	40"
CNC86 51.3032	30	1¼	32	62	24	¾-16	68	28	30	75	63	22	20	44"
CNC86 51.3040	30	1½	40	66	32	⅝-11	68	28	30	90	73	22	22	50"
CNC86 51.4016	40	¾	16	54	12	¾-16	83	32.5		67	54	22	15	35"
CNC86 51.4020	40	¾	20	54	12	¾-16	83	32.5		67	54	22	15	35"
CNC86 51.4025	40	1	25	63	17	¾-16	83	32.5		75	59	22	17	40"
CNC86 51.4032	40	1¼	32	69	24	¾-16	83	32.5		75	63	22	20	44"
CNC86 51.4040	40	1½	40	76	32	⅝-11	83	32.5		90	73	22	22	54"
CNC86 51.4045	40	1¾	45	83	40	⅝-11	83	32		100	83		24	60"
CNC86 51.4050	40	2	50	81	32	⅝-11	83	32.5		100	83	22	24	60"
CNC86 51.5020	50	¾	20	57	12	¾-16	98	35		67	54	30	15	35"
CNC86 51.5025	50	1	25	63	17	¾-16	98	35		80	59	30	17	40"
CNC86 51.5032	50	1¼	32	69	24	¾-16	98	35		80	63	30	20	44"
CNC86 51.5040	50	1½	40	76	32	⅝-11	98	35		100	73	30	22	54"
CNC86 51.5050	50	2	50	88	42	⅝-11	98	35		100	83	30	24	60"
CNC86 51.6020	60	¾	20	57	12	¾-16	123	42.5		80	54	30	15	35"
CNC86 51.6025	60	1	25	63	17	¾-16	123	42.5		80	59	30	17	40"
CNC86 51.6032	60	1¼	32	69	24	¾-16	123	42.5		80	63	30	20	44"
CNC86 51.6040	60	1½	40	76	32	⅝-11	123	42.5		100	73	30	22	54"
CNC86 51.6045	60	1¾	45	83	40	⅝-11	123	42		100	83	30	22	54"
CNC86 51.6050	60	2	50	89	40	⅝-11	123	42.5		100	83	30	24	60"
CNC86 51.6065	60	2½	65	89	40	⅝-18	123	42		100	83	30	22	54"
CNC86 51.8020	80	¾	20	57	12	¾-16	158	55		80	54	40	15	35"
CNC86 51.8025	80	1	25	63	17	¾-16	158	55		80	59	40	17	40"
CNC86 51.8032	80	1¼	32	69	24	¾-16	158	55		80	63	40	20	44"
CNC86 51.8040	80	1½	40	76	32	½-13	158	55		100	73	40	22	54"
CNC86 51.8050	80	2	50	88	42	½-13	158	55		100	83	40	24	60"

