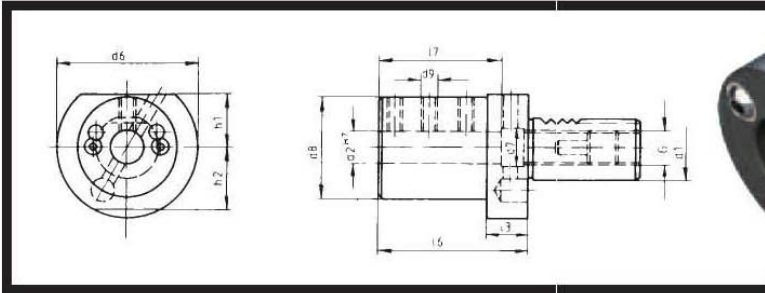


# CALL US TOLL FREE TO ORDER: (800) 423-5145

## Boring Bar Holder – Form E2

Dual External Coolant Flow



PART NUMBER	d <sub>1</sub>	d <sub>2</sub> in	d <sub>3</sub> mm	d <sub>4</sub>	d <sub>5</sub>	d <sub>6</sub>	d <sub>7</sub>	d <sub>8</sub>	d <sub>9</sub>	h <sub>1</sub>	h <sub>2</sub>	L <sub>3</sub>	L <sub>4</sub>	L <sub>7</sub>	G
CNC86 52.1606	16	1/4	6	40	7	40	10-32	18	18	13	13	44	34	5/16-24	
CNC86 52.1608	16	5/16	8	45	7	40	10-32	18	18	13	13	44	34	5/16-24	
CNC86 52.1610	16	3/8	10	45	7	40	10-32	18	18	13	13	44	34	5/16-24	
CNC86 52.1612	16	1/2	12	45	7	40	1/4-28	18	18	13	13	44	34	5/16-24	
CNC86 52.1616	16	5/8	16	45	7	40	1/4-28	18	18	13	13	44	34	5/16-24	
CNC86 52.2008	20	5/16	8	50	9	40	10-24	23	23	18	18	50	41	3/8-16	
CNC86 52.2010	20	3/8	10	50	9	40	10-24	23	23	18	18	50	41	3/8-16	
CNC86 52.2012	20	1/2	12	50	9	40	1/4-20	23	23	18	18	50	41	3/8-16	
CNC86 52.2016	20	5/8	16	50	9	40	1/4-20	23	23	18	18	50	41	3/8-16	
CNC86 52.2020	20	3/4	20	50	9	50	1/4-20	23	23	18	18	50	41	3/8-16	
CNC86 52.2025	20	1	25	50	9	50	1/4-20	23	23	18	18	60	51	3/8-16	
CNC86 52.2508	25	5/16	8	58	12.5	40	1/4-20	25	25	18	18	50	41	3/8-16	
CNC86 52.2510	25	3/8	10	58	12.5	40	1/4-20	25	25	18	18	50	41	3/8-16	
CNC86 52.2512	25	1/2	12	58	12.5	40	1/4-20	25	25	18	18	50	41	3/8-16	
CNC86 52.2516	25	5/8	16	58	12.5	40	1/4-20	25	25	18	18	50	41	3/8-16	
CNC86 52.2520	25	3/4	20	58	12.5	58	1/4-20	25	25	18	18	50	41	3/8-16	
CNC86 52.2525	25	1	25	58	12.5	58	1/4-20	25	25	18	18	60	51	3/8-16	
CNC86 52.3006	30	1/4	6	68	14	55	10-32	28	30	22	22	60	51	5/8-18	
CNC86 52.3008	30	5/16	8	68	16.5	55	1/4-20	28	30	22	22	60	51	5/8-11	
CNC86 52.3010	30	3/8	10	68	16.5	55	1/4-20	28	30	22	22	60	51	5/8-11	
CNC86 52.3012	30	1/2	12	68	16.5	55	1/4-20	28	30	22	22	60	51	5/8-11	
CNC86 52.3016	30	5/8	16	68	16.5	55	1/4-20	28	30	22	22	60	51	5/8-11	
CNC86 52.3020	30	3/4	20	68	16.5	55	1/4-20	28	30	22	22	60	51	5/8-11	
CNC86 52.3025	30	1	25	68	16.5	55	1/4-20	28	30	22	22	60	51	5/8-11	
CNC86 52.3032	30	1 1/4	32	68	16.5	68	3/8-16	28	30	22	22	75	61	5/8-11	
CNC86 52.3040	30	1 1/2	40	83	41	74	1/2-13	32	30	22	22	90	74	5/8-18	
CNC86 52.4008	40	5/16	8	83	20.5	55	1/4-20	32.5		22	22	75	61	5/8-11	
CNC86 52.4010	40	3/8	10	83	20.5	55	1/4-20	32.5		22	22	75	61	5/8-11	
CNC86 52.4012	40	1/2	12	83	20.5	55	3/8-16	32.5		22	22	75	61	5/8-11	
CNC86 52.4016	40	5/8	16	83	20.5	55	3/8-16	32.5		22	22	75	61	5/8-11	
CNC86 52.4020	40	3/4	20	83	20.5	55	3/8-16	32.5		22	22	75	61	5/8-11	
CNC86 52.4025	40	1	25	83	20.5	55	1/2-13	32.5		22	22	75	61	5/8-11	
CNC86 52.4032	40	1 1/4	32	83	20.5	83	1/2-13	32.5		22	22	75	61	5/8-11	
CNC86 52.4040	40	1 1/2	40	83	20.5	83	1/2-13	32.5		22	22	90	76	5/8-11	
CNC86 52.4045	40	1 3/4	45	83	46	74	1/2-13	32		22	22	90	74	5/8-18	
CNC86 52.4050	40	2	50	83	51	83	1/2-13	32				100	86	5/8-18	
CNC86 52.5012	50	1/2	12	98	26.5	68	3/8-16	35		30	30	90	76	5/8-11	
CNC86 52.5016	50	5/8	16	98	26.5	68	3/8-16	35		30	30	90	76	5/8-11	
CNC86 52.5020	50	3/4	20	98	26.5	68	1/2-13	35		30	30	90	76	5/8-11	
CNC86 52.5025	50	1	25	98	26.5	68	1/2-13	35		30	30	90	76	5/8-11	
CNC86 52.5032	50	1 1/4	32	98	26.5	68	1/2-13	35		30	30	90	76	5/8-11	
CNC86 52.5040	50	1 1/2	40	98	26.5	98	1/2-13	35		30	30	90	76	5/8-11	
CNC86 52.5045	50	1 3/4	45	98	46	95	1/2-13	35		30	30	90	76	5/8-18	
CNC86 52.5050	50	2	50	98	26.5	98	1/2-13	35		30	30	100	86	5/8-18	
CNC86 52.5065	50	2 1/2	65	102	66	102	1/2-13	42				108	86	5/8-18	
CNC86 52.6016	60	5/8	16	123	40.5	68	3/8-16	42.5		30	30	90	76	3/4-16	
CNC86 52.6020	60	3/4	20	123	40.5	68	1/2-13	42.5		30	30	90	76	5/16-16	
CNC86 52.6025	60	1	25	123	40.5	68	1/2-13	42.5		30	30	90	76	3/4-16	
CNC86 52.6032	60	1 1/4	32	123	40.5	68	1/2-13	42.5		30	30	90	76	3/4-16	
CNC86 52.6040	60	1 1/2	40	123	40.5	98	1/2-13	42.5		30	30	90	76	3/4-16	
CNC86 52.6050	60	2	50	123	40.5	98	1/2-13	42.5		30	30	100	86	3/4-16	
CNC86 52.6065	60	2 1/2	65	123	66	108	1/2-13	42		30	30	100	86	5/8-18	
CNC86 52.8020	80	3/4	20	158	40.5	68	1/2-13	55		30	30	100	86	5/8-18	
CNC86 52.8025	80	1	25	158	40.5	68	1/2-13	55		30	30	100	86	3/4-16	
CNC86 52.8032	80	1 1/4	32	158	40.5	68	1/2-13	55		30	30	100	86	3/4-16	
CNC86 52.8040	80	1 1/2	40	158	40.5	98	1/2-13	55		30	30	100	86	3/4-16	
CNC86 52.8050	80	2	50	158	40.5	98	1/2-13	55		30	30	100	86	3/4-16	
CNC86 52.8065	80	2 1/2	65	158	66	98	1/2-13	55		40	40	100	80	3/4-16	

**ROVI**  
PRODUCTS INC.  
RoviProducts.com

CALL US TOLL FREE TO ORDER:  
**(800) 423-5145**



Expanding Collets - Tool Blocks  
Collet Chucks - Special Tooling