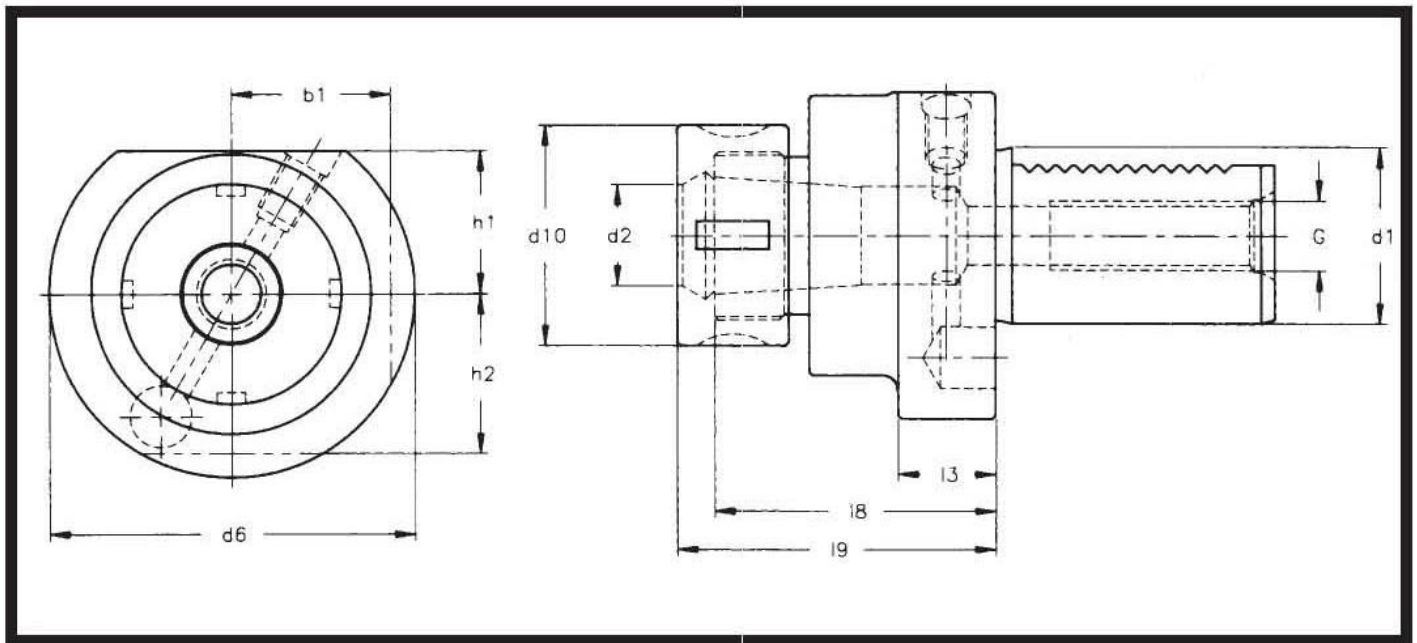


# CALL US TOLL FREE TO ORDER: (800) 423-5145

## Collet Chuck – Form E3 TG75 and TG100 Style



| PART NUMBER      | d <sub>1</sub> | d <sub>2</sub> inch | d <sub>6</sub> | d <sub>10</sub> | b <sub>1</sub> | L <sub>3</sub> | L <sub>4</sub> | L <sub>5</sub> | h <sub>1</sub> | h <sub>2</sub> | g      | COLLET TYPE |
|------------------|----------------|---------------------|----------------|-----------------|----------------|----------------|----------------|----------------|----------------|----------------|--------|-------------|
| CNC86 53.3075TG  | 30             | 3/64-3/4            | 68             | 50              | 30             | 22             | 63             | 77.4           | 28             | 30             | 5/8-18 | 75TG        |
| CNC86 53.30100TG | 30             | 3/32-1              | 68             | 60              | 30             | 22             | 63             | 82.1           | 28             | 30             | 5/8-18 | 100TG       |
| CNC86 53.4075TG  | 40             | 3/64-3/4            | 83             | 50              |                | 22             | 63             | 77.4           | 32.5           |                | 5/8-18 | 75TG        |
| CNC86 53.40100TG | 40             | 3/32-1              | 83             | 60              |                | 22             | 63             | 82.1           | 32.5           |                | 5/8-18 | 100TG       |
| CNC86 53.5075TG  | 50             | 3/64-3/4            | 98             | 50              |                | 30             | 71             | 77.4           | 35             |                | 5/8-18 | 75TG        |
| CNC86 53.50100TG | 50             | 3/32-1              | 98             | 60              |                | 30             | 71             | 82.1           | 35             |                | 5/8-18 | 100TG       |
| CNC86 53.6075TG  | 60             | 3/64-3/4            | 123            | 50              |                | 30             | 71             | 77.4           | 42.5           |                | 5/8-18 | 75TG        |
| CNC86 53.60100TG | 60             | 3/32-1              | 123            | 60              |                | 30             | 71             | 82.1           | 42.5           |                | 5/8-18 | 100TG       |
| CNC86 53.8075TG  | 80             | 3/64-3/4            | 158            | 50              |                | 40             | 63             | 77.4           | 55             |                | 5/8-18 | 75TG        |
| CNC86 53.80100TG | 80             | 3/32-1              | 158            | 60              |                | 40             | 63             | 82.1           | 55             |                | 5/8-18 | 100TG       |

**ROVI**  
PRODUCTS INC.  
RoviProducts.com

CALL US TOLL FREE TO ORDER:  
**(800) 423-5145**

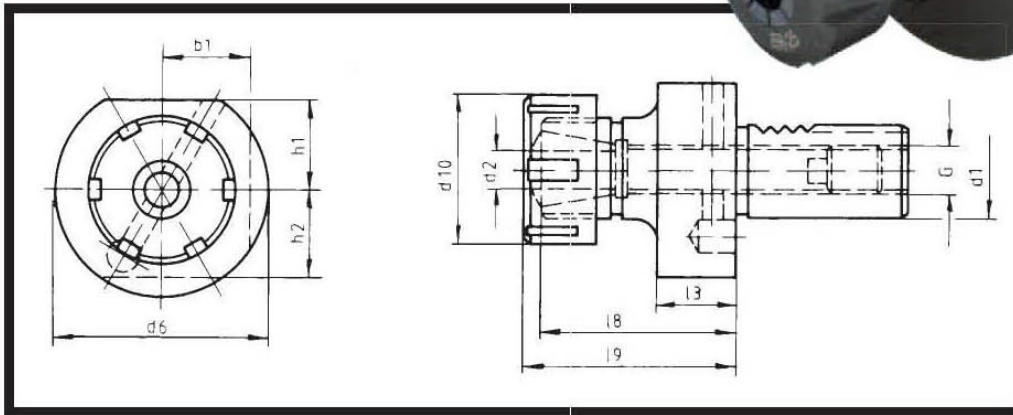


Expanding Collets - Tool Blocks  
Collet Chucks - Special Tooling

# CALL US TOLL FREE TO ORDER: (800) 423-5145

## Collet Chuck – Form E3

ER & RDO Style



| PART NUMBER    | d <sub>1</sub> | d <sub>2</sub> in | d <sub>2</sub> mm | d <sub>6</sub> | d <sub>10</sub> | b <sub>1</sub> | L <sub>3</sub> | L <sub>6</sub> | L <sub>9</sub> | h <sub>1</sub> | h <sub>2</sub> | G       | COLLET TYPE |
|----------------|----------------|-------------------|-------------------|----------------|-----------------|----------------|----------------|----------------|----------------|----------------|----------------|---------|-------------|
| CNC86 53.1616  | 16             | 1/32-3/8          | 1/2-10            | 40             | 28              |                | 13             | 30             | 40             | 18             | 18             | 5/16-24 | ER16        |
| CNC86 53.1620  | 16             | 1/32-9/16         | 1-12              | 40             | 34              |                | 13             | 33             | 45             | 18             | 18             | 5/16-24 | ER20        |
| CNC86 53.2016  | 20             | 1/32-3/8          | 1/2-10            | 50             | 28              |                | 18             | 30             | 40             | 23             | 23             | 3/8-24  | ER16        |
| CNC86 53.2025  | 20             | 1/32-5/8          | 1-16              | 50             | 42              |                | 18             | 38             | 50             | 23             | 23             | 3/8-24  | ER25        |
| CNC86 53.2032  | 20             | 1/16-3/4          | 2-20              | 50             | 50              |                | 18             | 48             | 60             | 23             | 23             | 3/8-24  | ER32        |
| CNC86 53.2040  | 20             | 3/32-1 1/32       | 3-25              | 50             | 63              |                | 18             | 52             | 66             | 23             | 23             | 3/8-24  | ER40        |
| CNC86 53.2525  | 25             | 1/32-5/8          | 1-16              | 58             | 42              |                | 18             | 38             | 50             | 25             | 25             | 3/8-24  | ER25        |
| CNC86 53.2532  | 25             | 1/16-3/4          | 2-20              | 58             | 50              |                | 18             | 48             | 60             | 25             | 25             | 3/8-24  | ER32        |
| CNC86 53.3025  | 30             | 1/32-5/8          | 1-16              | 68             | 42              | 30             | 22             | 63             | 75             | 28             | 30             | 5/8-18  | ER25        |
| CNC86 53.3032  | 30             | 1/16-3/4          | 2-20              | 68             | 50              | 30             | 22             | 63             | 75             | 28             | 30             | 5/8-18  | ER32        |
| CNC86 53.3040  | 30             | 3/32-1 1/32       | 3-25              | 68             | 63              | 30             | 22             | 61             | 75             | 28             | 30             | 5/8-18  | ER40        |
| CNC86 53.4025  | 40             | 1/32-5/8          | 1-16              | 83             | 42              |                | 22             | 63             | 75             | 32.5           |                | 5/8-18  | ER25        |
| CNC86 53.4032  | 40             | 1/16-3/4          | 2-20              | 83             | 50              |                | 22             | 63             | 75             | 32.5           |                | 5/8-18  | ER32        |
| CNC86 53.4040  | 40             | 3/32-1 1/32       | 3-25              | 83             | 63              |                | 22             | 61             | 75             | 32.5           |                | 5/8-18  | ER40        |
| CNC86 53.5040  | 50             | 3/32-1 1/32       | 3-25              | 98             | 63              |                | 30             | 61             | 75             | 35             |                | 5/8-18  | ER40        |
| CNC86 53.6040  | 60             | 3/32-1 1/32       | 3-25              | 123            | 63              |                | 30             | 61             | 75             | 42.5           |                | 5/8-18  | ER40        |
| CNC86 53.20415 | 20             | 1/16-5/8          | 1 1/2-16          | 50             | 43              |                | 18             | 43             | 57             | 23             | 23             | 5/8-18  | EX25        |
| CNC86 53.25415 | 25             | 1/16-5/8          | 1 1/2-16          | 58             | 43              |                | 18             | 48             | 62             | 25             | 25             | 5/8-18  | EX25        |
| CNC86 53.30415 | 30             | 1/16-5/8          | 1 1/2-16          | 68             | 43              | 30             | 22             | 47             | 57             | 28             | 30             | 5/8-18  | EX25        |
| CNC86 53.30462 | 30             | 1/16-1            | 1 1/2-25          | 68             | 60              |                | 22             | 59             | 75             | 28             | 30             | 5/8-18  | EX32        |
| CNC86 53.40415 | 40             | 1/16-5/8          | 1 1/2-16          | 83             | 43              | 30             | 22             | 43             | 57             | 32.5           |                | 5/8-18  | EX25        |
| CNC86 53.40462 | 40             | 1/16-1            | 1 1/2-25          | 83             | 60              | 30             | 22             | 59             | 75             | 32.5           |                | 5/8-18  | EX32        |
| CNC86 53.40467 | 40             | 1/8-1 1/4         | 3 1/2-32          | 83             | 72              |                | 30             | 78             | 90             | 32.5           |                | 5/8-18  | EX40        |
| CNC86 53.50462 | 50             | 1/16-1            | 1 1/2-25          | 98             | 60              |                | 30             | 59             | 75             | 35             |                | 5/8-18  | EX32        |
| CNC86 53.50467 | 50             | 1/8-1 1/4         | 3 1/2-32          | 98             | 72              |                | 30             | 78             | 90             | 35             |                | 5/8-18  | EX40        |
| CNC86 53.60467 | 60             | 1/8-1 1/4         | 3 1/2-32          | 123            | 72              |                | 30             | 78             | 90             | 42.5           |                | 5/8-18  | EX40        |

