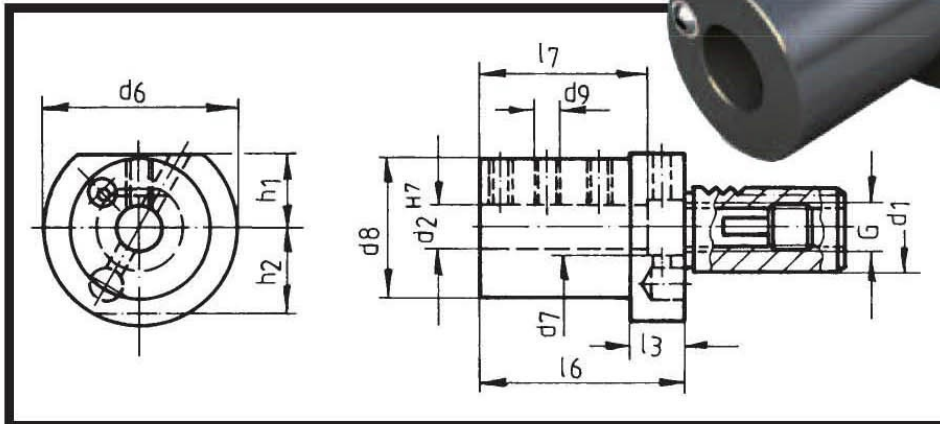


# CALL US TOLL FREE TO ORDER: (800) 423-5145

## Boring Bar Holder – Form E4

External Single Coolant Flow



PART NUMBER	d <sub>1</sub>	d <sub>2</sub> in	d <sub>2</sub> mm	d <sub>6</sub>	d <sub>7</sub>	d <sub>8</sub>	d <sub>9</sub>	h <sub>1</sub>	h <sub>2</sub>	L <sub>1</sub>	L <sub>2</sub>	L <sub>7</sub>	G
CNC86 54.3008	30	5/16	8	68	16.5	55	1/4-20	28	30	22	85	70	5/8-11
CNC86 54.3010	30	3/8	10	68	16.5	55	5/16-18	28	30	22	85	70	5/8-11
CNC86 54.3012	30	1/2	12	68	16.5	55	5/16-18	28	30	22	85	70	5/8-11
CNC86 54.3016	30	5/8	16	68	16.5	55	3/8-16	28	30	22	85	70	5/8-11
CNC86 54.3020	30	3/4	20	68	16.5	55	3/8-16	28	30	22	85	70	5/8-11
CNC86 54.3025	30	1	25	68	16.5	55	1/2-13	28	30	22	85	70	5/8-11
CNC86 54.3032	30	1 1/4	32	68	16.5	55	1/2-13	28	30	30	85	70	5/8-11
CNC86 54.3040	30	1 1/2	40	68	41	73	1/2-13	28	30	22	85	70	5/8-11
CNC86 54.4008	40	5/16	8	83	20.5	55	1/4-20	32.5		22	95	80	5/8-11
CNC86 54.4010	40	3/8	10	83	20.5	55	5/16-18	32.5		22	95	80	5/8-11
CNC86 54.4012	40	1/2	12	83	20.5	55	3/8-16	32.5		22	95	80	5/8-11
CNC86 54.4016	40	5/8	16	83	20.5	55	3/8-16	32.5		22	95	80	5/8-11
CNC86 54.4020	40	3/4	20	83	20.5	55	3/8-16	32.5		22	95	80	5/8-11
CNC86 54.4025	40	1	25	83	20.5	55	1/2-13	32.5		22	95	80	5/8-11
CNC86 54.4032	40	1 1/4	32	83	20.5	55	1/2-13	32.5		30	95	80	5/8-11
CNC86 54.4040	40	1 1/2	40	83	20.5	70	1/2-13	32.5		30	95	80	5/8-11
CNC86 54.5012	50	1/2	12	98	26.5	68	3/8-16	35		30	95	78	5/8-11
CNC86 54.5016	50	5/8	16	98	26.5	68	3/8-16	35		30	95	78	5/8-11
CNC86 54.5020	50	3/4	20	98	26.5	68	1/2-13	35		30	95	78	5/8-11
CNC86 54.5025	50	1	25	98	26.5	68	1/2-13	35		30	95	78	5/8-11
CNC86 54.5032	50	1 1/4	32	98	26.5	68	1/2-13	35		30	95	78	5/8-11
CNC86 54.5040	50	1 1/2	40	98	26.5	68	1/2-13	35		30	95	78	5/8-11
CNC86 54.5045	50	1 3/4	45	98	46	89	1/2-13	35		30	95	78	5/8-18
CNC86 54.5050	50	2	50	98	51	89	1/2-13	35		30	95	78	5/8-18
CNC86 54.6016	60	5/8	16	123	40.5	68	1/2-13	42.5		30	100	83	3/4-16
CNC86 54.6020	60	3/4	20	123	40.5	68	1/2-13	42.5		30	100	83	3/4-16
CNC86 54.6025	60	1	25	123	40.5	68	1/2-13	42.5		30	100	83	3/4-16
CNC86 54.6032	60	1 1/4	32	123	40.5	68	1/2-13	42.5		30	100	83	3/4-16
CNC86 54.6040	60	1 1/2	40	123	40.5	80	1/2-13	42.5		30	100	83	3/4-16
CNC86 54.6050	60	2	50	123	51	95	1/2-13	42		30	100	83	5/8-18

